

# Henry 2DW1 LWD RT 200TVD

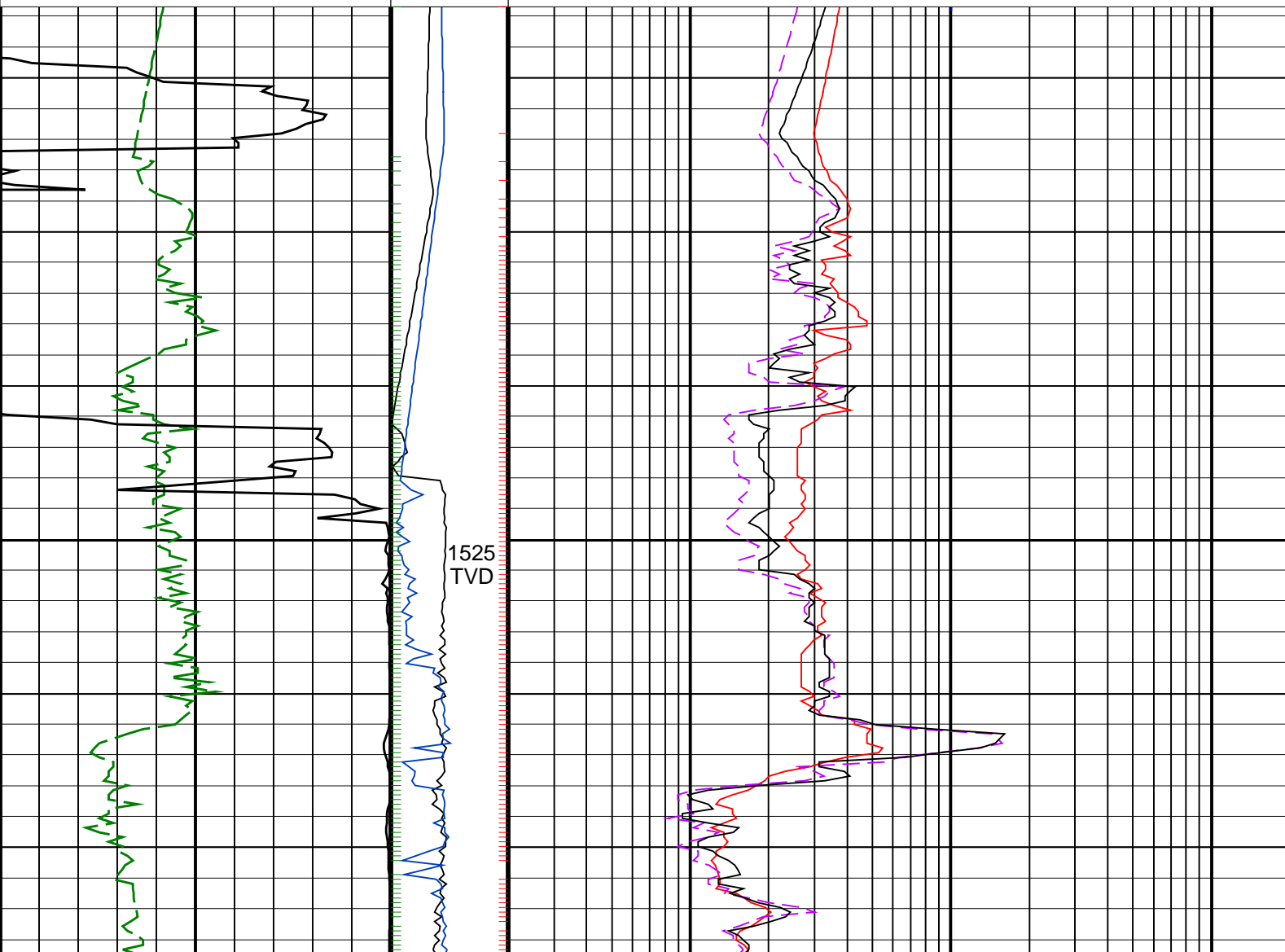
IDEAL Version: ID13\_OC\_11 <TVD> Vertical Scale: 1:200

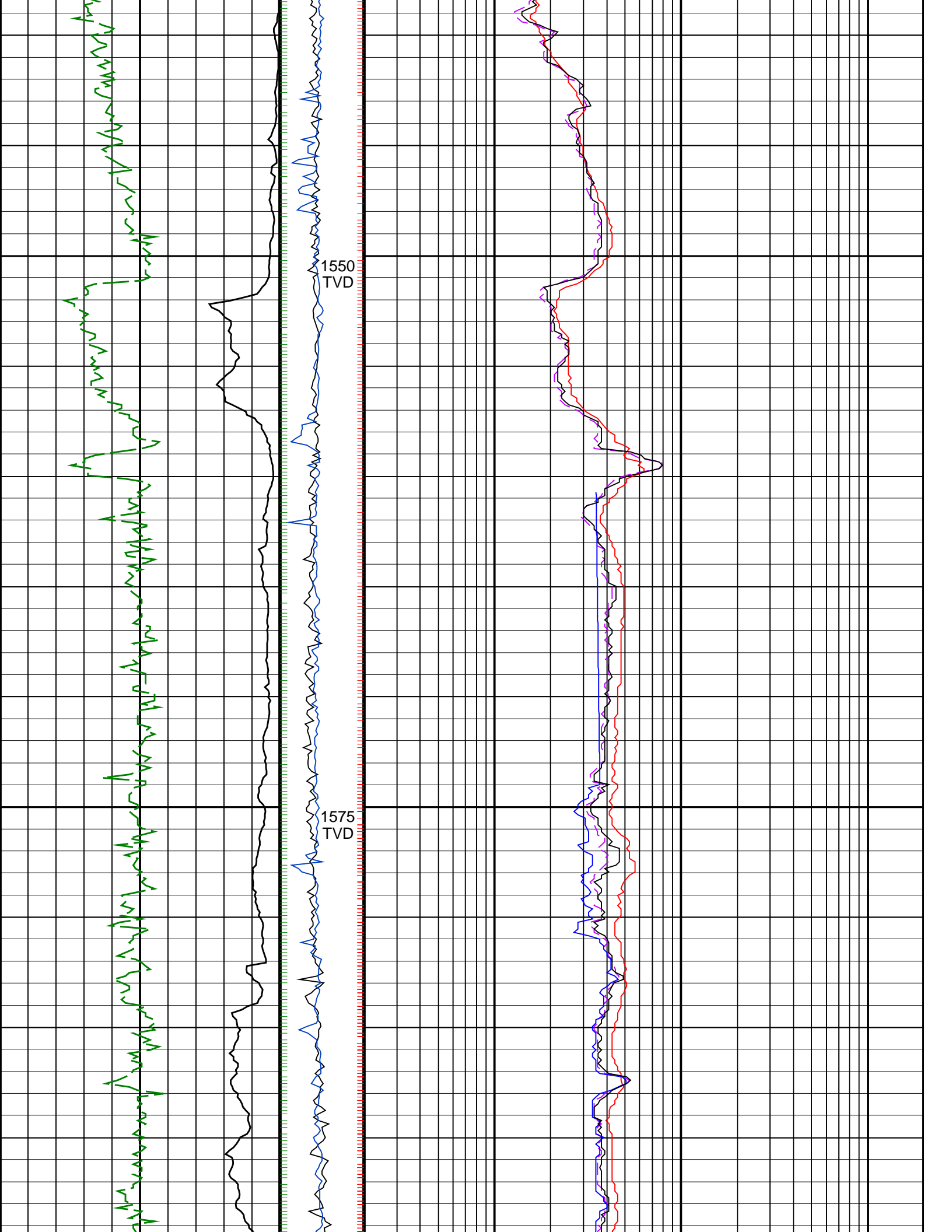
Graphics File Created: 17-Sep-2008 14:11

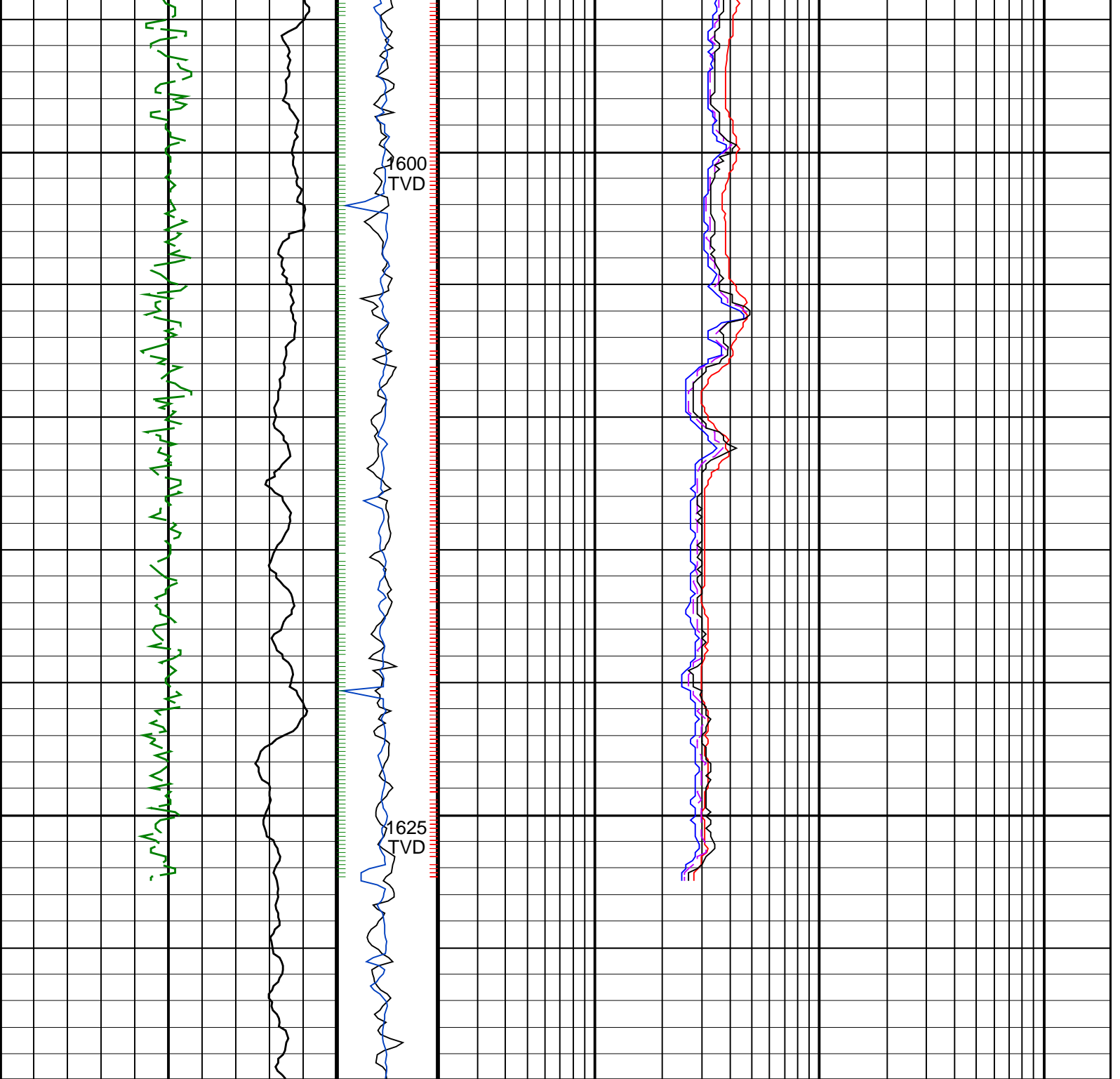
## PIP SUMMARY

- ┆ ARC Gamma Ray Samples
- ┆ ARC Resistivity Samples
- ┆ IMP RP28 PIP

		ARC BHCorr Phase-Shift Resistivity 40-in. at 2 MHz, Real-Time (P40H_RT)	0.2	(OHMM)	200
		ARC BHCorr Phase-Shift Resistivity 16-in. at 2 MHz, Real-Time (P16H_RT)	0.2	(OHMM)	200
ARC Gamma Ray, Real-Time (ARC_GR_RT) (GAPI)	MWD Collar RPM (CRPM_RT) (RPM)	ARC BHCorr Phase-Shift Resistivity 28-in. at 2 MHz, Real-Time (P28H_RT)	0.2	(OHMM)	200
0	0 250				
ROP*5 (ROP5) (M/HR)	PKPK RPM (Stick_RT) (RPM)	ARC BHCorr Attenuation Resistivity 40-in. at 2 MHz, Real-Time (A40H_RT)	0.2	(OHMM)	200
200	0 500				







200	ROP*5 (ROP5) (M/HR)	0	PKPK RPM (Stick_RT) (RPM)	0.2	ARC BHCorr Attenuation Resistivity 40-in. at 2 MHz, Real-Time (A40H_RT) (OHMM)	200
0	ARC Gamma Ray, Real-Time (ARC_GR_RT) (GAPI)	200	MWD Collar RPM (CRPM_RT) (RPM)	0.2	ARC BHCorr Phase-Shift Resistivity 28-in. at 2 MHz, Real-Time (P28H_RT) (OHMM)	200
				0.2	ARC BHCorr Phase-Shift Resistivity 16-in. at 2 MHz, Real-Time (P16H_RT) (OHMM)	200
				0.2	ARC BHCorr Phase-Shift Resistivity 40-in. at 2 MHz, Real-Time (P40H_RT) (OHMM)	200

PIP SUMMARY

- ┆ ARC Gamma Ray Samples
- ┆ ARC Resistivity Samples

